

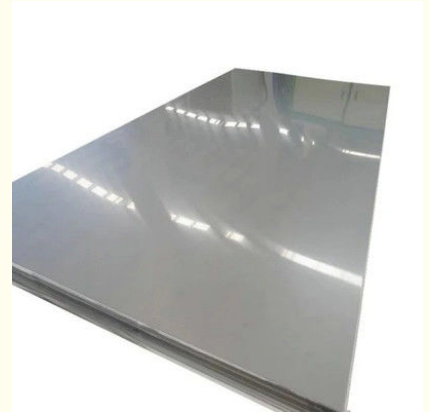


Cold Rolled Stainless Steel Sheet Fabrication Sheet Plate 4x8 2205 904L 2b Ba No 4

Our Product Introduction

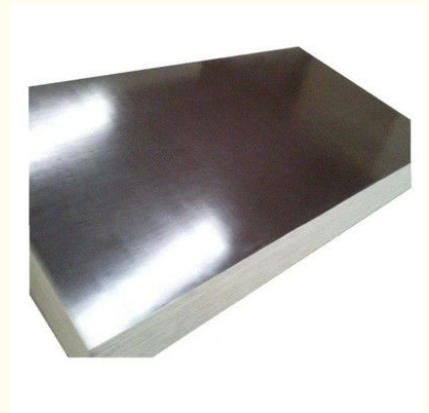
Basic Information

- Place of Origin: china
- Brand Name: jinshunlai
- Certification: ISO, AISI, ASTM, GB, EN, DIN
- Model Number: 0.1nm-900nm
- Minimum Order Quantity: 1kg
- Price: Contact Us
- Packaging Details: Waterproof Paper, Steel Strip Packed and other Standard Export Seaworthy Package, or customized package
- Delivery Time: 5day
- Payment Terms: L/C, T/T , Western Union
- Supply Ability: 90000ton



Product Specification

- Application: Construction, Decoration, Industry, Etc.
- Certificate: ISO, SGS, BV, Etc.
- Edge: Slit Edge, Mill Edge
- Form: Coils, Sheets, Strips, Plates, Etc.
- Length: 1000mm-6000mm
- Material: Stainless Steel
- Package: Standard Export Sea-worthy Package
- Payment Term: T/T, L/C, Western Union, Etc.
- Processing: Cutting, Bending, Welding, Punching, Etc.
- Surface Finish: 2B, BA, No.4, 8K, HL, Etc.
- Thickness: 0.5mm-6mm
- Tolerance: Thickness: +/-0.02mm, Width: +/-2mm
- Width: 1000mm-2000mm
- Highlight: **2205 Stainless Steel Sheet Fabrication,**
4x8 Stainless Steel Sheet Fabrication,



for more products please visit us on copper-solid.com

Product Description

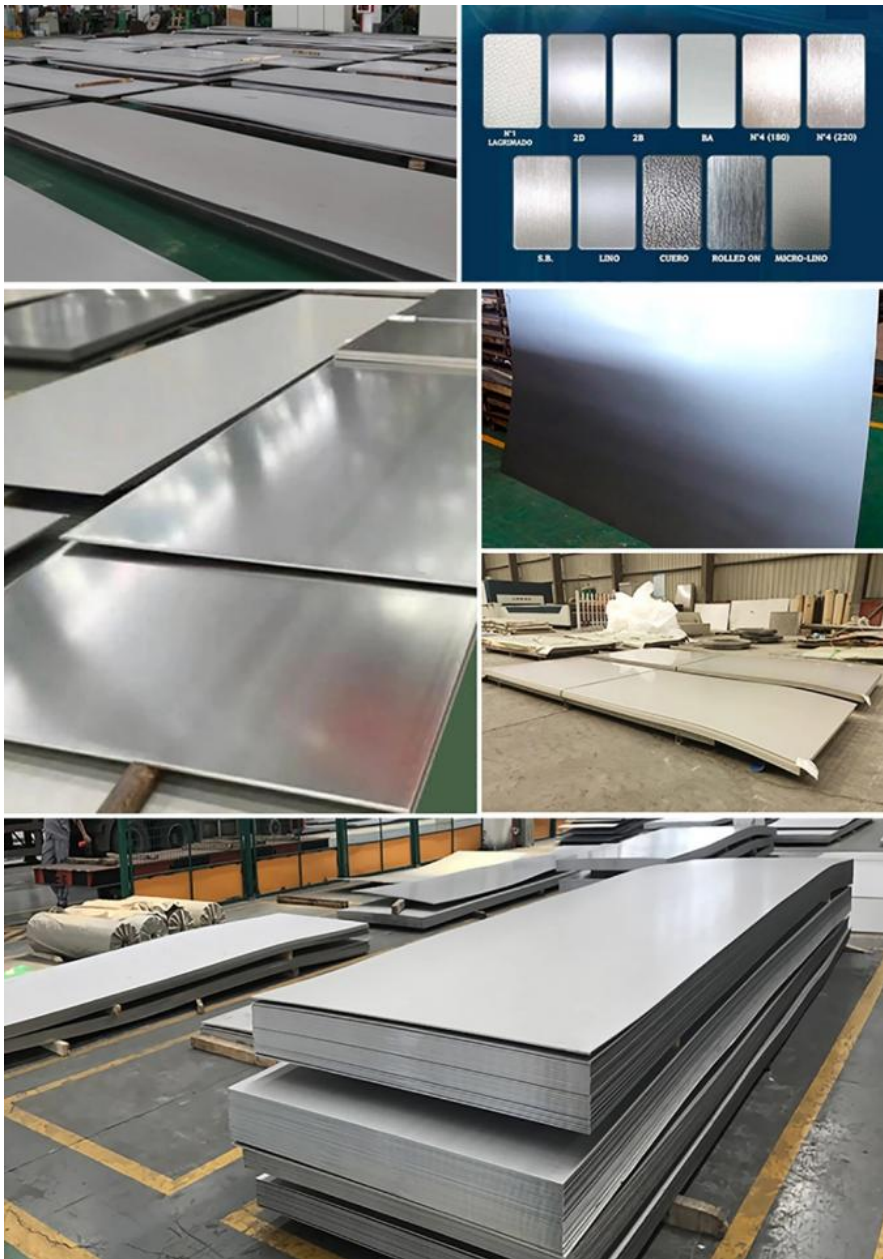
PRODUCT DESCRIPTION

COLD ROLLED 2B BA NO. 4 SURFACE JIS 201 202 304L 304 309 310S 316 316L 430 2205 904L STAINLESS STEEL SHEET

THE THINNER SHEETS HAVE HIGHER STRENGTH VALUES. THE SPECIFICATION OF THE SHEETS IS THE A240 FOR PRESSURE VESSEL AND HIGH TEMPERATURE APPLICATIONS. THE ASTM A240 SS 304 SHEET CAN WITHSTAND HIGH TEMPERATURES UP TO 870 DEGREES CELSIUS. THE SHEETS ARE USED FOR THIS REASON IN EVAPORATORS, HEAT EXCHANGERS AND IN OTHER HIGH TEMPERATURE APPLICATIONS. THE STAINLESS STEEL 304 PLATE IS ALSO USED IN DRUMS, BARRELS, DAIRY EQUIPMENT, FOOD PROCESSING AND IN HOSPITAL EQUIPMENT.

PRODUCT DESCRIPTION

STANDARD:	JIS, AISI, ASTM, GB, DIN, EN, JIS, AISI, ASTM, GB, DIN, EN, ETC.	PLACE OF ORIGIN:	JIANGSU, CHINA
BRAND NAME:	TISCO	MODEL NUMBER :	201 304
TYPE:	WELDED	STEEL GRADE:	300 SERIES
APPLICATION:	INDUSTRY/CONSTRUCTION	CERTIFICATION:	ISO, AISI, ASTM, GB, EN, DIN, JIS
WELDING LINE TYPE:	ERW	TOLERANCE:	±1%
PROCESSING SERVICE:	WELDING	GRADE:	SS 304 SS316L
PRODUCT NAME:	STAINLESS STEEL SHEET	KEY WORD:	SCHEDULE 10 STAINLESS STEEL SHEET
SURFACE:	POLISHED	PRICE TERM:	CIF CFR FOB EX-WORK
MOQ:	1 TON	TECHNIQUE:	HOT ROLLED , COLD ROLLED , EXTRUSION
PAYMENT:	L/C,T/T	EDGE:	MILL EDGE SLIT EDGE
PORT:	QINGDAO, CHINA		



Wuxi Jinnuo copper Co.,Ltd



+86-17763564398



sales01@shuangheyisteel.com



copper-solid.com

32 Chengnan Road, New District, Wuxi City, Jiangsu Province, China